

PROJECT NAME:	APPROVED BY:
CATALOG NO:	TYPE NO:

LCPSD SERIES - LED Emergency Power Packs

with Selectable Self-Test/Self-Diagnostics

The New Evenlite LCPSD series LED conversion packs now feature field selectable Self-Test/Self-Diagnostics as standard. The Evenlite LCPSD series LED conversion packs are U.L. Classified for field installation allowing the conversion of LED luminaires to be used for normal and emergency operation. Available in 7, 12 & 25 watt capacities to suit a wide range of LED drivers and luminaire types. The LCPSD is suitable for indoor and damp locations and fit seamlessly into or adjacent to the luminaire. In the event of power loss the LCPSD switches to emergency mode and operates the existing luminaire for 90 minutes. Superior high density, long life Lithium LiFePO4 batteries also enable compact enclosures.

Construction

- Compact galvanized steel housing finished in durable polyester paint
- Plenum rated remote test switch with integral AC indicator, mounted in a single gang plate and provided with switch box and quick connector
- 24" lead wires with dual flexible metallic conduit
- IC Rated and suitable for use in plenum and damp location luminaires

Electrical

- Field selectable Self-Test, Self-Diagnostics function
- Self-sensing array forward voltage (see table for model output voltage range), LCPSD automatically adjusts the output current to provide constant wattage to the luminaire array for 90 minutes
- Constant power operation maintains illumination throughout the discharge time without degradation
- Long Life, thermally safe high capacity maintenance free Lithium Iron Phosphate battery, provides the required 90 minutes emergency duration and environmentally friendly end of life recycling
- Two wire universal 120-277 line sensing input 50/60Hz
- Energy efficient solid-state switching power supply, Class 2 compliant and meets California Title 20
- Ambient operating temperature range 41° - 122° F (5°C - 50°C) max
- Programmed two-stage solid state charger with charge and discharge protection and rapid 24 hour recharge
- High surge protected to ANSI standard
- Zero current LVCO ensures positive charge acceptance following an extended battery discharge
- Brownout sensing assures emergency illumination during periods of low line voltage
- RoHS Compliant

ORDERING GUIDE – LCPSD Series

Model	Output Rating	Wire Configuration
LCPSD	7	DF Dual Flexible Conduit 24" (both ends)
	12	
	25	
	25HV	
LCPSD		

Fill in fields from categories above and complete type and part number.

Type Number:	Full Part Number:
--------------	-------------------



Certification

- Tested and Listed by Underwriters Laboratories in compliance with UL924, and CSA-C22.2 No.141-15
- UL924 classified for field installation
- UL 1310 Certified, Class 2 compliant
- Meets or exceeds NFPA 101 Life Safety Code, NFPA 70-NEC and OSHA requirements
- California Title 20 Certified



Warranty

- 5 Year Fixture Limited Warranty - view complete terms on line at www.evenlite.com/warranty/terms



Model	Output Power (max)	Output Voltage Range	Output Current	Input Power Rating 120/277V (max)
LCPSD7DF	7 Watts	10-60VDC	0.7A (@10VDC) 0.12A (@60VDC)	4 Watts
LCPSD12DF	12 Watts	10-60VDC	1.2A (@10VDC)- 0.2A (@60VDC)	6 Watts
LCPSD25DF	25 Watts	20-60VDC	1.25a (@20VDC) 0.42a (@60VDC)	7 Watts
LCPSD25HVDF	25 Watts	50-200VDC	0.5A (@50VDC) 0.125A (@200VDC)	7 Watts

Caution: Not suitable for luminaires/drivers with output voltages higher than shown in the output current table above. Check luminaire LED driver specifications to verify compatibility.

Example: LCPSD25DF

LCPSD Series - LED Emergency Power Packs

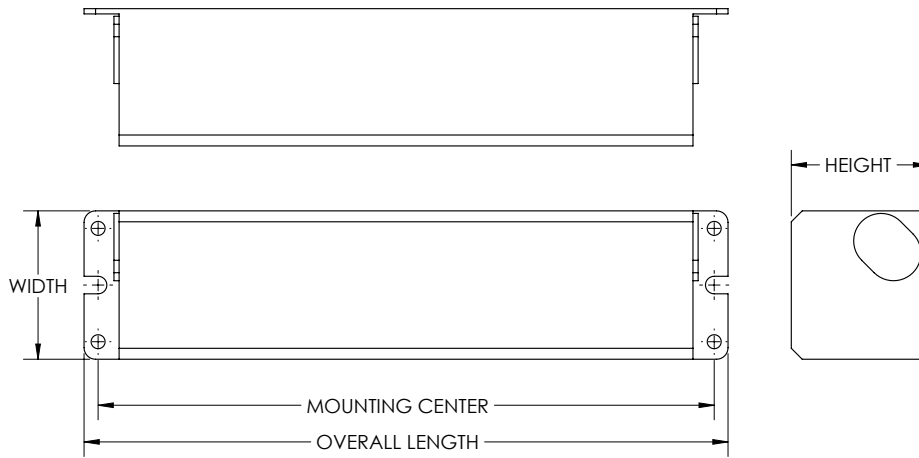
Dual color LED lamp indicator shows the following status:

- (1) Green color On / Ready
blinking: Testing
- (2) Red color (Service Alert)
- (3) Service Alert LED Code (Red color LED lamp indicator)



Selectable Self-Diagnostics

●	One blink, 4 second pause	Battery is not connected
●●	Two blinks, 4 second pause	Battery voltage too low
●●●	Three blinks, 4 second pause	Charger board circuit failure
●●●●	Four blinks, 4 second pause	Transfer system failure
●●●●●	Five blinks, 4 second pause	LED load not connected or failure



LCPSD Dimensions

Model	Length	Width	Height	Mounting Center
LCPSD7	10.24"	2.26"	1.34"	9.937"
LCPSD12	10.24"	2.26"	1.34"	9.937"
LCPSD25 LCPSDHV25	17.7"	2.26"	1.43"	17.4"

