

# SOVEREIGN II - VERSATILE LED EXIT SIGNS

## Architectural Edgelit

### Architects and Contractors don't always agree, now they can.

The timeless Sovereign edgelit exit sign has been enhanced to the Sovereign II and continues to set the standard for architectural appeal. Quality construction includes precision die cast aluminum housing with subtle lines and soft curves to appeal to the most discerning eye. New features include a surface mounting canopy that enables field conversion, or for added versatility can be ordered as a "SU" Surface universal for field selection. A unique ½" square tube pendant features seismic rated hang straight tilt, finished to match to the housing color selected. The unique crystal-clear exit legend with exceptional uniformity and can be field converted if required. Contractor friendly recessed backbox accommodates ceiling thicknesses up to 1 ¾". Sovereign II is available in many cost-effective configurations offering superlative quality, performance, and aesthetics.

### Construction

- Recessed ceiling back box features universal adjustable mounting brackets. Optional old work clips available for installation in existing ceilings
- Full size universal, self-adhesive Chevron arrows with template enable on-site configuration
- Lens Panel is "Last-to-Assemble" snap-in for versatility and ease of installation
- Lens panel can easily be changed from single to double face in the field
- Hinged retaining springs eliminate exposed mounting hardware on recessed model
- SU Surface Universal option allows for field configurable surface mount to a standard j-box, and takes the guess work out of surface mounting applications
- Low profile recessed housing is suitable for old or new work installations and is type IC Rated
- Modular design provides ease of installation and matching configurations
- Quality sealed brushed aluminum finish, white, black, painted brass, painted bronze finishes are available, consult factory for custom finishes
- Contoured, crystal clear laser formed edge lit lens
- Custom legends with white LED light source available to order
- Precision pressure die cast aluminum legend holder, trim and surface mount housing
- Available with a range of information signage or custom graphics to order
- Recessed AC Indicator and Test Switch



### Electrical

- Unique electronic driver circuit provides current control and protection ensuring optimum LED efficiency and life
- Available with Master/Remote combinations
- Zero current LVCO ensures positive charge acceptance following extended discharge
- Brownout sensing assures emergency illumination during periods of low line voltage
- All versions feature fully integrated electronic components
- Universal 120/277 VAC field selectable input
- Battery Diagnostic Circuit monitors battery status, detects cell failure and issues alert of reduced capacity and the need to replace battery
- Diagnostic Battery Monitoring on all "EM" models
- Premium long life high temperature rated, fused Nickel Cadmium battery, operating temperature 10° to 40°C

### Illumination

- Refractive light guide engineered to optimize LED utilization and illumination uniformity
- Maintenance free LED Light source with 25+ years life expectancy

### Certification

- Approved for use in New York City calendar #48851
- UL Listed 3 hour emergency duration standard
- UL listed for damp locations 0° to 40° C
- UL 924 Listed by Underwriters Laboratories and meets or exceeds all performance standards as required by NFPA 101, NFPA 70- NEC and OSHA
- California Energy Commission (CEC) Title 20 Compliant

### Warranty

- 5 year limited warranty



# Sovereign II LED Exit Signs

## ORDERING GUIDE – SOVII

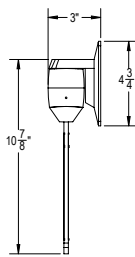
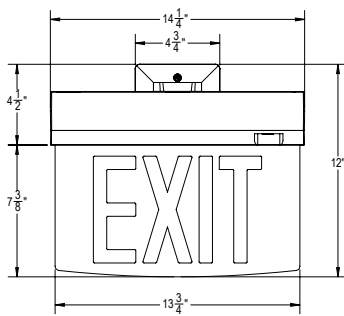
Example: SOVII-EM-R-1C-BA-RC-AR-SD-FT

Model	Operation	Legend Size/ Letter Color	Faces/ Background	Trim/ Housing Color	Mounting	Chevron Direction	Options
SOVII	<b>AC</b> AC Only 120/277 VAC  <b>EM</b> Battery Backup Emergency	<b>R</b> RED Standard 6" EXIT  <b>G</b> GREEN Standard 6" EXIT  <b>NR</b> RED 8" EXIT  <b>NG</b> GREEN 8" EXIT	<b>1C</b> Single Face, Clear Background (standard)  <b>1M</b> Single Face, Mirror Background  <b>1W</b> Single Face, White Background  <b>2M</b> Double Face, Mirror Background <i>(Mirror simulates clear background for double face exits)</i>  <b>2W</b> Double Face, White Background	<b>BA</b> Brushed Aluminum  <b>BK</b> Black Finish  <b>BR</b> Brushed Brass Painted Finish  <b>WH</b> White Finish  <b>CC</b> Custom Color (specify)  <b>BZ</b> Painted Bronze	<b>Standard Mounting</b> <b>RC</b> Recessed Ceiling <b>UP</b> Recessed Mount Preship Back Box <b>SC</b> Surface Ceiling <b>SW</b> Surface Wall <b>SE</b> Surface End  <b>Optional Mounting</b> <b>SU</b> Surface Universal <b>PA</b> 12" Swivel Pendant <b>PB</b> 24" Swivel Pendant <b>PC</b> 36" Swivel Pendant <b>PD</b> 48" Swivel Pendant <b>PE</b> 60" Swivel Pendant <b>PF</b> 72" Swivel Pendant <b>MU</b> Mullion Mount (specify)	<b>UC</b> Field Installed Adhesive Chevron Indicators  <b>AR</b> Arrow Right EXIT> <b>AL</b> Arrow Left <EXIT <b>AA</b> Double Arrow <EXIT>  <b>LR</b> Arrow Left/Arrow Right <EXIT/EXIT> (Double Face units only)  <b>NA</b> No Arrows  <i>Factory installation of Chevrons is recommended for Double Face Signs</i>	<b>DK</b> Two Circuit input 120 or 277 selectable  <b>SD</b> Self-Test / Self- Diagnostic (EM models Only)  <b>IR</b> Self-Diagnostics with Infrared remote Testing (EM models only)  <b>TLRT</b> Infrared hand held Transmitter (order separately)  <b>VA</b> Other Input Supply Voltage (Consult Factory)  <b>F</b> Flash in Emergency Mode (EM Models) or continuous Flash in AC models  <b>FA</b> Flash in AC and Emergency Mode on 12-24V (AC or DC) normally-off fire alarm signal (Available for AC and EM models)  <b>FB</b> FA Option including Buzzer  <b>FZ</b> F Option including Buzzer  <b>DL</b> Damp location listed  <b>FT</b> Flat Trim for Recessed Ceiling Mount  <b>FP</b> Flat Panel (no curve on panel bottom)  <b>IN</b> Inverted Legend – Use with Mullion Mount  <b>EU</b> Euro Legends (Consult factory for full range)  <b>OW</b> Old Work Clips
SOVII							

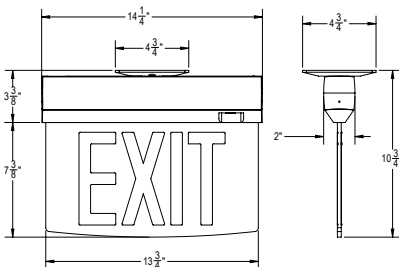
Fill in fields from categories above and complete type and part number.

Type Number:

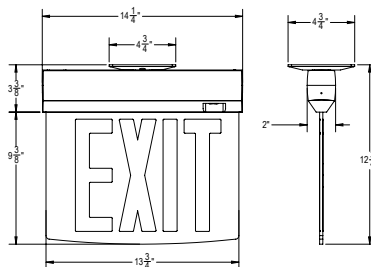
Full Part Number:



(SW) Surface Wall Mount



Surface Ceiling Mount 6"

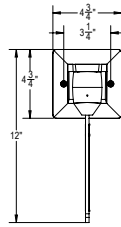
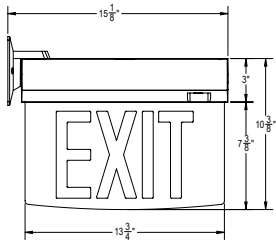


Surface Ceiling Mount 8"

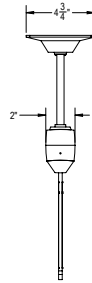
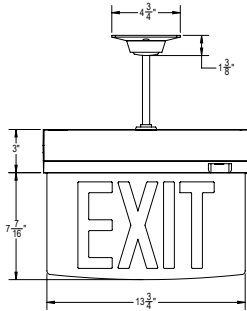


(SC) Surface Ceiling Mount

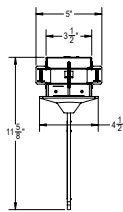
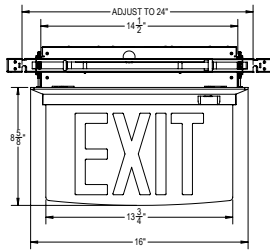
# Sovereign II LED Exit Signs



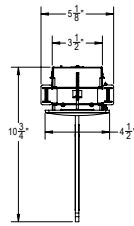
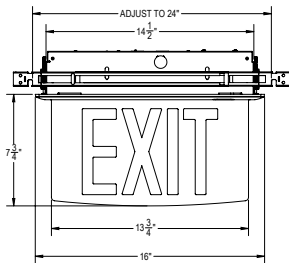
(SE) Surface End Mount



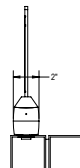
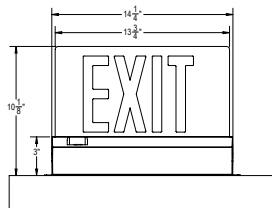
(AP) Architectural Pendant Mount



(RC) Accented Trim Recessed Ceiling Mount



(RC FT) Flat Trim Recessed Ceiling Mount



(MM) Mullion Mount



Power Consumption				
Type	Volts	Max Watts	Power Factor	
RED	AC Only	120 / 277	1.5	.70
RED	Battery Backup	120 / 277	2.5	.70
RED	Battery Backup with Remote	120 / 277	3.0	.73
GREEN	AC Only	120 / 277	2.3	.70
GREEN	Battery Backup	120 / 277	3.0	.76
GREEN	Battery Backup with Remote	120 / 277	4.0	.81