

INSTALLATION INSTRUCTIONS AND OWNER'S MANUAL

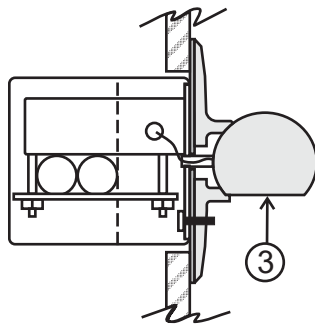
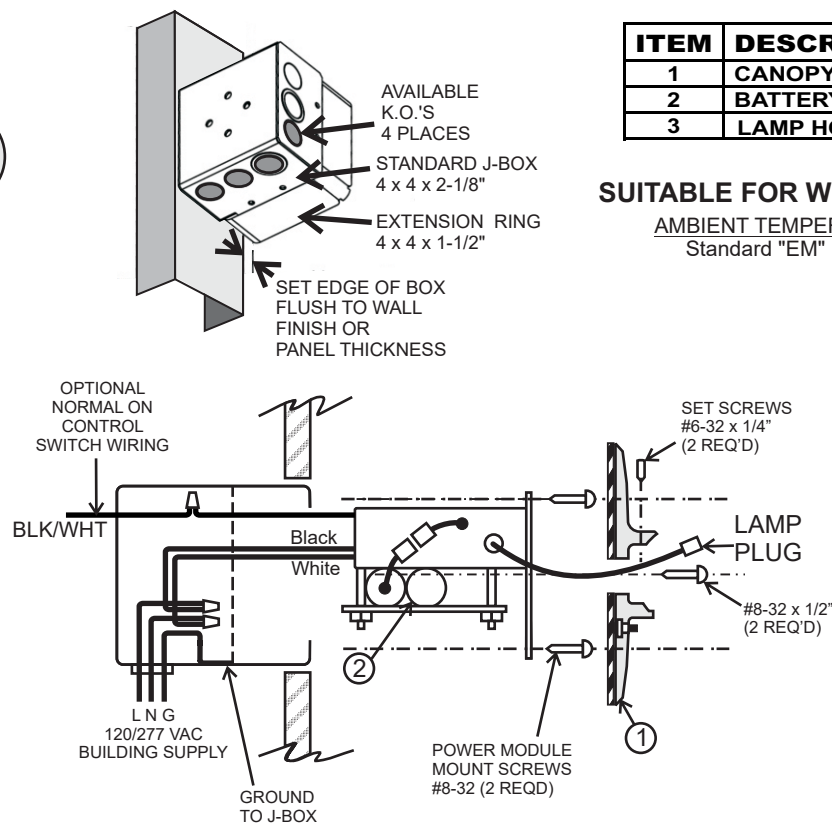


Fig. 1



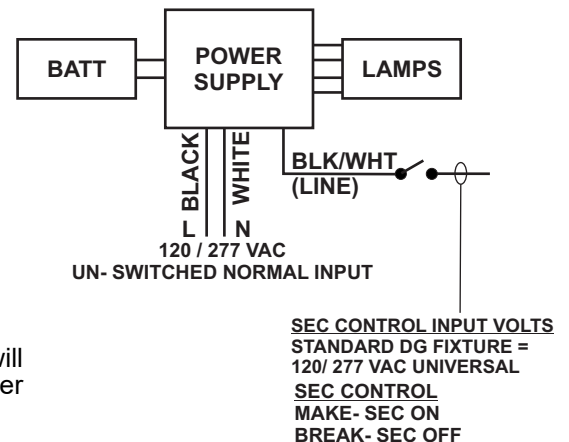
ITEM	DESCRIPTION
1	CANOPY POWER ASSBY
2	BATTERY PACK 6.4V
3	LAMP HOUSING ASSBY

SUITABLE FOR WET LOCATIONS

AMBIENT TEMPERATURE LIMITS:
Standard "EM" models: 50° C

J- Box and Supply Wiring (Standard)

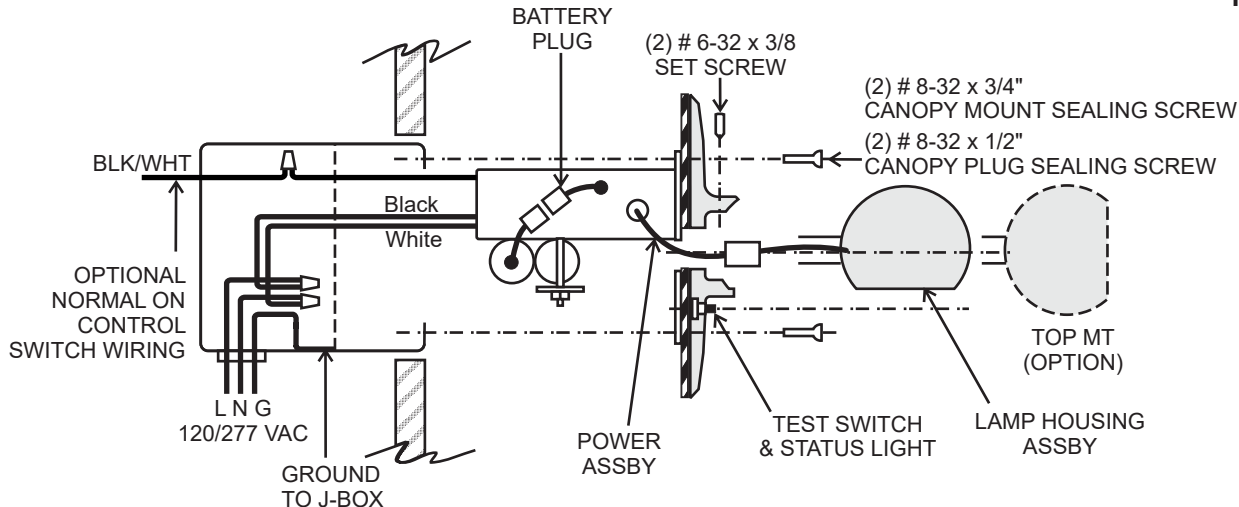
1. See above. Assemble standard 4" x 4" deep j-box with 1 1/2" extension. Note available knock-outs for wiring. Remove K.O's in areas shown for wiring and connectors.
2. Align edge of extension flush or just below finish panel surface.
3. Connect BLACK and WHITE AC input wiring to building supply with wire nuts, and connect GROUND to Housing with Screw mount.
4. SECURITY LIGHTING SWITCH CONTROL (OPTION -SD)
5. Connect the BATTERY plug: NOTE If AC power is OFF, the fixture will turn ON under battery power. To minimize battery discharge, turn AC power ON after fixture is connected, or disconnect battery.



IMPORTANT SAFEGUARDS READ AND FOLLOW ALL SAFETY INSTRUCTIONS

1. Disconnect AC power before servicing.
2. Refer to wiring diagram for proper connections.
3. All servicing should be performed by qualified personnel.
4. Consult your local building code for approved wiring and installation.
5. Do not use this equipment for other than intended use.
6. Do not let power cords touch hot surfaces.
7. Mount and secure the fixture at a location and height to avoid ready access and tampering by unauthorized persons.
8. The use of accessory equipment is not recommended by the manufacturer and may cause an unsafe condition.
9. Suitable for wet locations. See product label for temperature limitations.

SAVE THESE INSTRUCTIONS



Fixture Assembly

1. Note position of (2) J-Box MOUNT screws and insert (2) #8-32 x 1/2" PLUG sealing screws with nuts into Canopy at unused locations.

2. Connect power supply wiring to building supply with standard wire nuts:

BLACK: Line 120-277VAC

WHITE: Neutral

BLK/WHT: Line (120-277VAC switch Option)

3. Connect GROUND to J-Box

4. Connect optional NORMALLY ON control switch (SW) Wiring

5. Connect the BATTERY plug. Insert power supply assembly in position and secure to J-Box with two #8-32 x 3/4" MOUNT sealing screws supplied and tighten to compress gasket evenly. **DO NOT** over tighten.

6. Place Lamp Housing Assembly over Canopy Plate and connect Lamp Plug.

NOTE: If AC power is OFF, the fixture will turn ON under battery power. To minimize battery discharge, turn AC power ON after fixture is connected.

7. Insert Lamp Plug wiring sleeve through center hole in Gasket while placing Lamp Housing in position. Tighten (2) #6-32 set screws to secure in position.

8. Turn ON building AC supply and operate test switch to confirm emergency operation. Batteries require 24 hrs for full charge. Operate control switch option where supplied to confirm normally ON operation.

9. TESTING EMERGENCY OPERATION

Press the PUSH TO TEST button(3 seconds) to operate fixture in emergency mode for one minute test. Lamp can be checked visually during this period. Alternatively; (a) AC power to the fixture may be interrupted by qualified personnel.

SELF-TEST DIAGNOSTICS

1. Install Emergency lighting according to the instructions on page 1-2. Once the AC power is supplied to fixture, the unit will automatically initiate a self-Test and self-diagnostic test as follows.

- Verifies battery disconnection, Charger failure, Load failure.
- One-minute self-testing(Battery discharging test) every month.
- 90 minutes self-testing (Battery discharging test) every year.

2. Dual color LED lamp shows the following status:

TEST FUNCTIONS	NORMAL or PASS	FAULT
Battery	GREEN OR AMBER	RED FLASH
Transfer Switch	No indication	ORANGE FLASH
Charger Status	No indication	RED FLASH
Connected Load Status	No indication	GREEN FLASH
CHARGE RATE		
Normal Full Charge	STEADY GREEN	
Normal Fast Charge	STEADY ORANGE	

The Emergency Fixture will automatically perform the following system tests:

MONTHLY TEST: 1 MINUTE LAMP OPERATION

Battery Condition, Transfer Switch Operation, Battery Charge Rate
Connected Load Continuity

ANNUAL TEST: 90 MINUTES LAMP OPERATION

12 months from the date of installation, an annual test is required by initiating full operation of the emergency load for 90 minutes, in compliance with NFPA Life Safety Code 101.

(1) **Standard System:** Periodic diagnostic tests will start at the same time the system was first activated with AC power.

NOTE: To avoid operation of emergency lighting at potentially undesirable times, automatic operation can be disabled by specification of Option "NAT", as designated in the Model Number Label. If such option is supplied, the annual test must be activated manually.

Self-test Diagnostic Functions (EM models)

STATUS	LED DISPLAY
Normal Full Charge	● GREEN ON
Normal Fast Charge	● ORANGE ON
Failed Battery	● ● RED FLASH FAST
Failed Lamp	● ● GREEN FLASH
Failed Transfer	● ● ORANGE FLASH
Failed Charger	● ● RED FLASH SLOW